



HANDSWELL'S CHAIN INDUSTRIES

hands you well always

CHAINS FOR CEMENT INDUSTRY








KNOW
US

HANDSWELL'S CHAIN INDUSTRIES LLP

Welcome to Handswell's Chain Industries LLP, where precision meets performance in the world of industrial conveyor chain manufacturing. With a rich legacy of excellence and a commitment to innovation, we have been a trusted partner for industries worldwide, providing top-tier conveyor chain solutions that drive efficiency and reliability.

At Handswell, we understand the critical role that conveyor chains play in the seamless operation of industrial processes. Our dedication to quality craftsmanship, cutting-edge technology, and customer satisfaction sets us apart in the industry





What sets us apart/ Why Us?

- 1. **Expertise and Experience:**** With over two decades of experience, our team of skilled professionals brings unparalleled expertise to every aspect of conveyor chain manufacturing. We have honed our craft, combining traditional craftsmanship with the latest advancements in materials and production techniques.
- 2. **Custom Solutions:**** We recognize that every industry has unique requirements. That's why we specialize in creating customized conveyor chain solutions tailored to meet the specific needs of our clients. From design to production, we work closely with our customers to ensure that our products exceed expectations.
- 3. **Innovation at the Core:**** In a rapidly evolving industrial landscape, we stay at the forefront of innovation. We are constantly innovating and investing in tools and technology such as **Laser, CNC** for **precise manufacturing** of parts. Our research and development team is dedicated to pushing the boundaries of what is possible, developing conveyor chain solutions that enhance performance, durability, and sustainability.



Our USP

4. **Quality Assurance:** Quality is non negotiable at **Handswell**. We adhere to rigorous quality control measures throughout the manufacturing process, ensuring that each conveyor chain leaving our facility meets the highest standards. Our commitment to quality extends beyond our products to encompass the entire customer experience.

5. **Manufacturing Facility:** Unlike other brands in the market, we have our own top class manufacturing plant with all the latest machines and infrastructure dedicated to conveyor chain manufacturing. We have been **white labelling** to **top brands** for more than **two decades** and our products have a wide reach not only in **India but also globally**.

6. **More Value compared to other brands:** Unlike the other known brands who are into buying and selling of products, **we are manufacturers with real facility and infrastructure**, who manufacture the products, buying directly from us **cuts the middleman fee**, hence better **value proposition**.

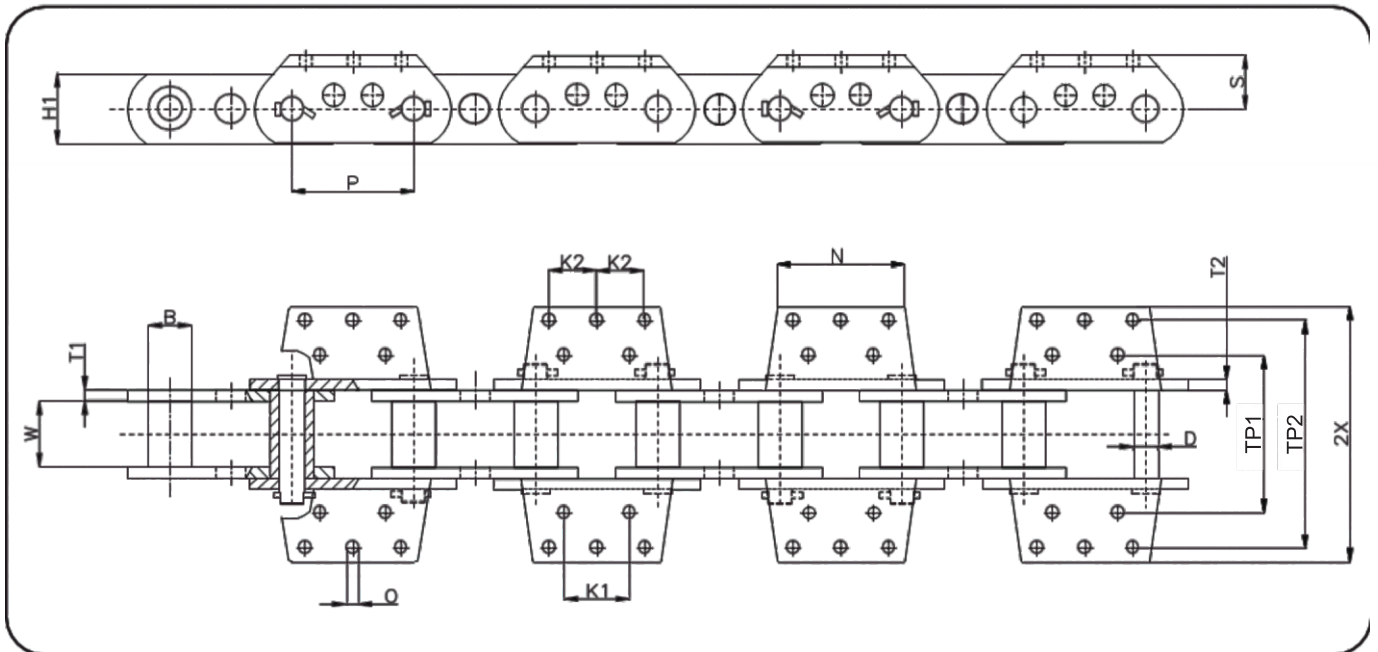


Customer Centric Approach

Our customers are at the heart of everything we do. We pride ourselves on **fostering long - term partnerships** by providing exceptional service, timely delivery, and ongoing support. Your success is our success, and we are dedicated to helping you achieve your operational goals.

Whether you are in **mining, manufacturing, agriculture, or any other industry** that relies on **conveyor systems**, Handswell's **Chain Industries** is your trusted partner for **premium conveyor chain** solutions. Explore the possibilities with us and experience the difference that quality and innovation can make in your operations.

BUCKET ELEVATOR CHAINS (K2,K4, K5)



Bucket Elevator Chain is based on standard large pitch conveyor chain with K-2 or G-4 attachments. Buckets are spaced evenly (usually every two links) over the length of chain. Three important construction features include the following: Superior wear resistance of pins and bushings, which reduces chain elongation.



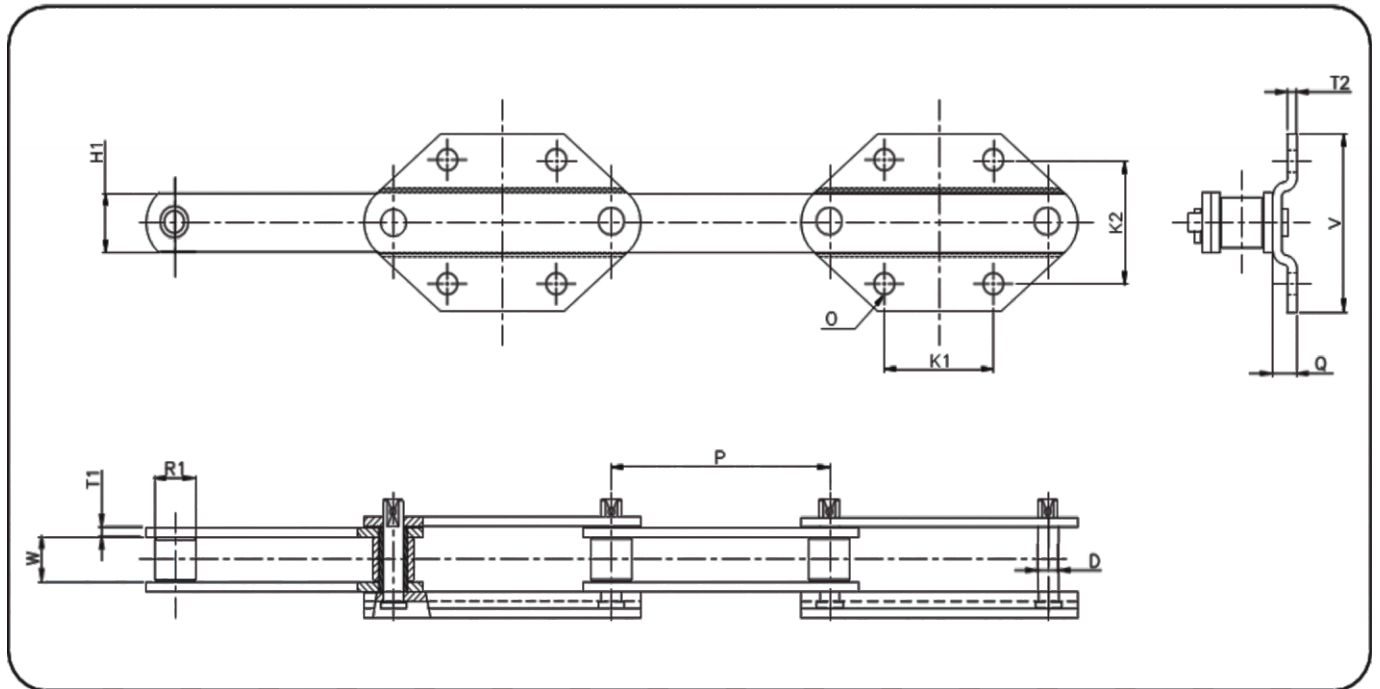
BUCKET ELEVATOR CHAINS (K2,K4, K5)

Chain No.	Pitch(P)	WIP (W)	Plate Height (H1)	I/P Thk. (T1)	O/P Thk. (T2)	Bush Diameter (B)	Pin Diameter (D)	Minimum Breaking Load, Kgf	Att. Type	Att. Height (S)	Trans. Pitch1 (TP1)	Trans. Pitch 2 (TP2)	Att. Hole Pitch (K1)	Att. Hole Pitch (K2)	Att. Hole Dia (O)	Overall Width (2X)
HL10160-BL	160.00	60.00	80.00	10.00	10.00	48.00	30.00	50000	K2	54.00	170.00	-	140.00	-	18.00	220.00
HL12152-BL	152.40	76.20	76.20	12.70	12.70	44.50	25.40	60000	K2	47.80	184.00	-	63.50	-	17.50	241.00
HL14152-BL	152.40	76.20	83.50	14.00	14.00	51.00	28.60	80000	K4	63.50	178.00	305.00	88.90	-	14.20	348.00
HL12152H-BL	152.40	76.20	82.60	12.70	12.70	44.45	25.40	69600	K4	63.50	177.80	304.80	88.90	-	15.00	368.00
HL12152L-BL	152.40	76.00	63.50	12.70	12.70	44.50	25.40	53100	K2	47.65	183.00	-	64.00	-	17.50	236.00
HL16177-BL	177.80	95.30	102.00	16.00	16.00	63.50	34.90	100000	K5	76.20	228.00	330.00	95.30	69.85	17.50	370.00
HL16177A-BL	177.80	95.30	101.60	16.00	16.00	60.30	31.75	110000	K5	76.20	228.60	330.20	95.30	69.85	17.50	383.00

*All dimensions are nominal actual dimensions may vary (mm)

- Customizations such as special coatings, SS304 for better corrosion resistance can be done on all chains on request

BUCKET ELEVATOR CHAINS (GA4)



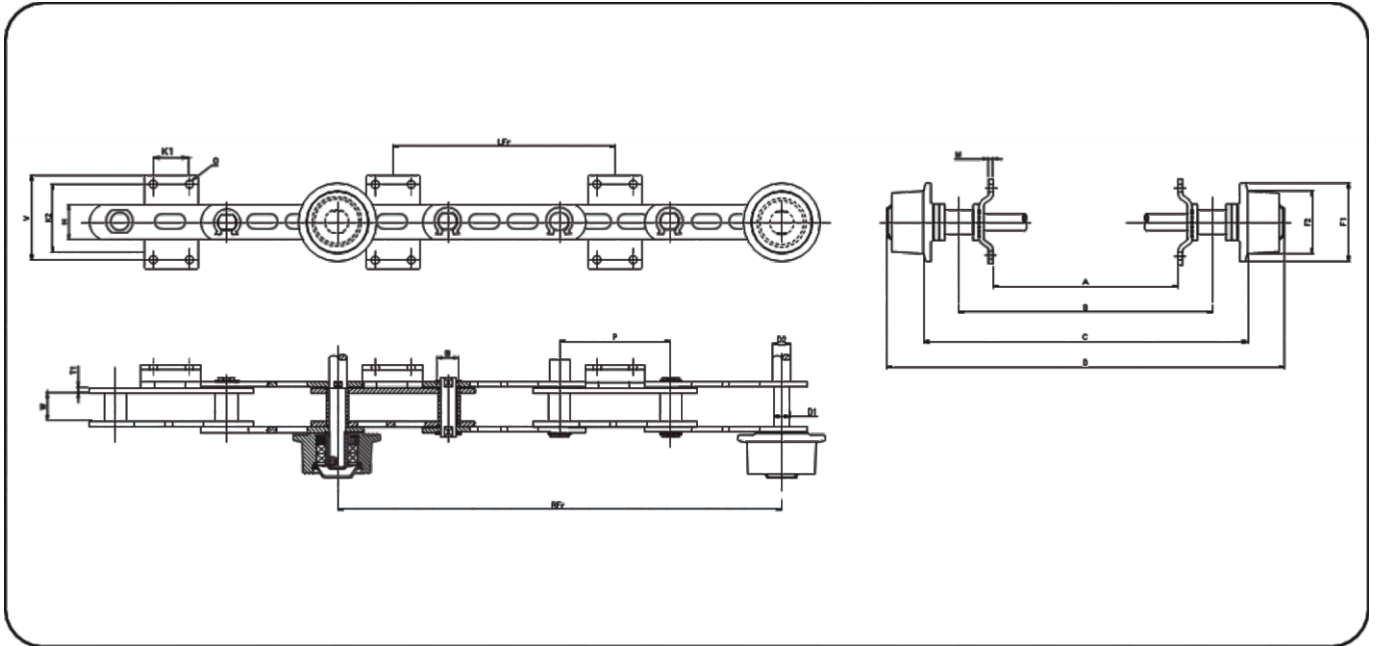
BUCKET ELEVATOR CHAINS (GA4)

Chain no.	Pitch (P)	WIP (W)	Plate Height (H1)	I/P Thk. (T1)	O/P Thk. (T2)	Roller Dia. (R1)	Pin Dia. (D)	Min. Breaking Load, Kgf	Att. Type	Att. Height (Q)	Att. Hole Pitch1 (K1)	Att. Hole Pitch2 (K2)	Att. Hole Dia. (O)	Overall Width (V)
HL06075-BL	75.00	30.00	40.00	6.00	6.00	29.00	14.40	19000	GA4	38.60	75.00	80.00	14.00	115.54
HL08076-BL	76.20	36.50	45.00	8.00	8.00	35.00	15.80	28500	GA4	46.50	75.00	80.00	14.00	116.00
HL10100H-BL	100.00	57.20	76.20	10.00	10.00	50.80	24.00	60000	GA4	65.10	100.00	100.00	16.00	143.50
HL10100-BL	100.00	57.20	63.50	10.00	10.00	50.80	24.00	48875	GA4	63.50	100.00	100.00	16.00	144.00
HL10100L-BL	100.00	51.40	50.80	10.00	10.00	40.10	19.10	35000	GA4	58.00	100.00	100.00	16.00	146.00
HL10125-BL	125.00	51.40	50.80	10.00	10.00	40.10	19.10	39500	GA4	60.00	125.00	110.00	18.00	146.00
HL10125A-BL	125.00	57.20	63.50	10.00	10.00	50.80	24.00	48875	GA4	63.50	125.00	110.00	18.00	146.00
HL12125-BL	125.00	68.00	90.00	12.00	12.00	63.50	32.00	73500	GA4	59.00	125.00	130.00	18.00	180.00
HL06150-BL	150.00	29.50	40.00	6.00	6.00	29.00	14.50	20000	GA4	38.75	75.00	80.00	14.00	115.50
HL06150S-BL	150.00	29.80	40.00	6.00	6.00	26.50	14.50	20000	GA4	38.75	75.00	80.00	14.00	115.50
HL08160-BL	160.00	44.50	65.00	8.00	8.00	42.40	21.20	35000	GA4	51.50	50.00	87.00	13.00	120.00
HL10160-BL	160.00	46.00	75.00	10.00	10.00	49.25	25.40	75000	GA4	59.00	80.00	92.00	15.00	129.60
HL15175-BL	175.00	88.00	110.00	15.00	15.00	85.00	42.00	166000	GA4	38.50	175.00	150.00	25.00	220.00
HL10200-BL	200.00	57.20	76.20	10.00	10.00	50.80	24.00	56400	GA4	65.10	200.00	150.00	16.00	193.50
HL10200L-BL	200.00	51.40	50.80	10.00	10.00	40.10	19.10	35000	GA4	58	100.00	100.00	16.00	146.00

*All dimensions are nominal actual dimensions may vary (mm)

- Customizations such as special coatings, SS304 for better corrosion resistance can be done on all chains on request

DEEP BUCKET CONVEYOR CHAINS



Deep bucket conveyors are carry bulk solid material without spills. They are fitted with specially designed chains working in two parallel strands, suitably interconnected and fitted with outboard rollers running on steel tracks.



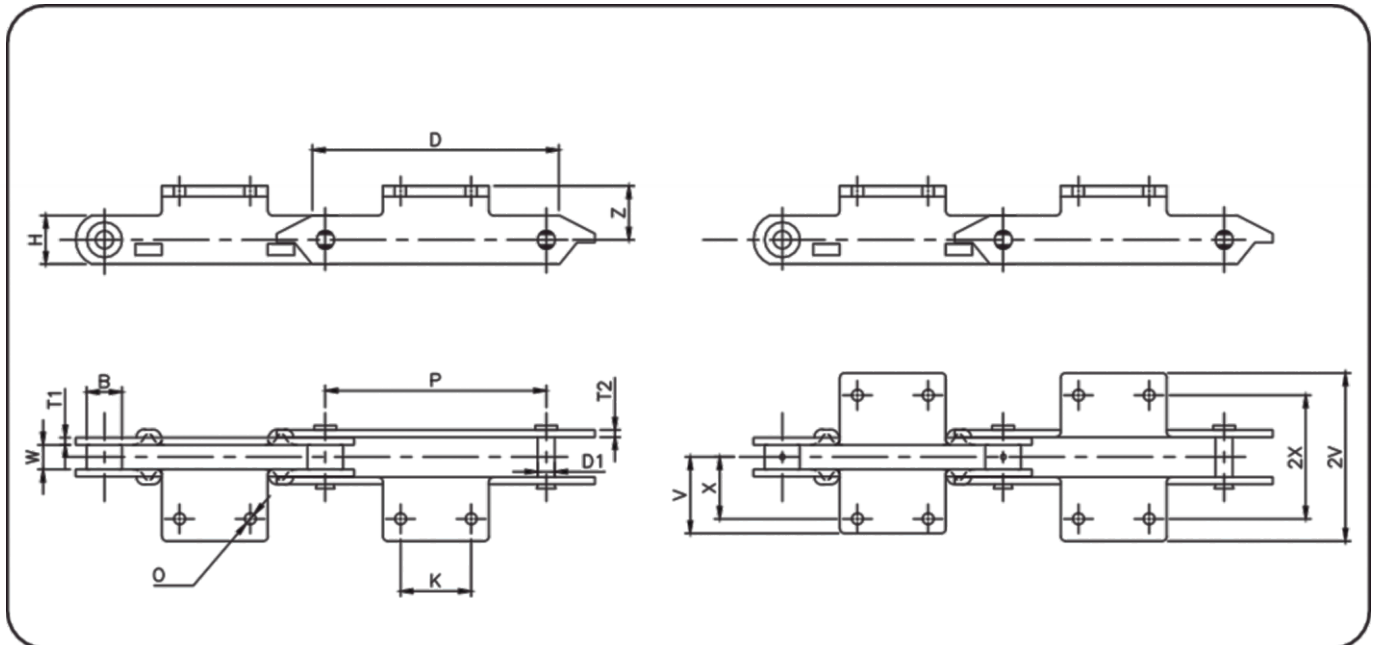
DEEP BUCKET CONVEYOR CHAINS

Chain no.	Pitch (P)	WIP (W)	Plate Ht. (H)	Plate Thk. (T1)	Att. Plate Thk. (M)	Bush Dia. (B)	Pin Dia. (D1)	Shaft Dia. (D2)	Min. Breaking Load Kgs	Dist. b/w Att. (Lfr)	Dist. b/w Shafts (Rfr)	Att. Hole Pitch1 (K1)	Att. Hole Pitch 2 (K2)	Att. Plate Width (V)	Att. Hole Dia. (O)	Roller Flange Dia. (F1)	Roller Body Dia. (F2)	Dist. b/w att. Plates of two strands (A)	Dist. b/w two parallel chains (B)	Dist. b/w roller ends of two chains (C)	Overall Width (O)
HL10160-DB	160.00	45.00	90.00	10.00	10.00	60.00	25.40	40.00	55000	480	960	46.00	149.00	192.00	13.50	175.00	140.00	435.00	520.00	910.00	1036.00
HL16250-DB	250.00	80.00	106.00	16.00	12.00	60.80	40.00	45.00	90000	550	1000	80.00	150.00	190.00	18.00	175.00	140.00	812.00	998.00	1192.00	1333.00
HL12250-DB	250.00	64.00	80.00	12.00	10.00	50.00	36.00	40.00	40000	500	1000	80.00	152.40	192.00	18.00	175.00	140.00	1010.00	1165.00	1313.00	1450.00
HL12315H-DB	315.00	81.00	100.00	12.00	10.00	54.00	36.00	40.00	70000	630	1260	115.00	170.00	210.00	18.00	175.00	140.00	1007.00	1216.00	1402.00	1566.00
HL14315L-DB	315.00	80.00	101.00	14.00	12.00	54.00	36.00	40.00	80000	630	1260	115.00	170.00	210.00	18.00	175.00	140.00	1007.00	1216.00	1402.00	1566.00
HL14315H-DB	315.00	80.00	120.00	14.00	12.00	54.00	36.00	40.00	125000	630	1260	115.00	170.00	213.00	18.00	175.00	140.00	1262.00	1466.00	1655.00	1792.00
HL16315-DB	315.00	80.00	100.00	16.00	10.00	54.00	36.00	40.00	125000	630	1260	115.00	170.00	210.00	18.00	175.00	140.00	1262.00	1468.00	1662.00	1822.00
HL14315-DB	315.00	80.00	100.00	14.00	10.00	54.00	36.00	40.00	87000	630	1260	115.00	170.00	210.00	18.00	175.00	140.00	1262.00	1466.00	1663.00	1800.00
HL12315L-DB	315.00	80.00	90.00	12.00	10.00	54.00	36.00	40.00	55000	630	1260	115.00	170.00	210.00	18.00	175.00	140.00	1012.00	1216.00	1400.00	1537.00
HL12315-DB	315.00	81.00	100.00	12.00	10.00	54.00	36.00	40.00	57500	630	1260	115.00	170.00	220.00	18.00	175.00	140.00	1009.00	1190.00	1331.00	1421.00
HL08315-DB	315.00	55.00	65.00	8.00	10.00	36.00	26.00	30.00	40000	630	1260	115.00	171.00	212.00	18.00	125.00	101.00	1088.00	1215.00	1335.00	1470.00

*All dimensions are nominal actual dimensions may vary (mm)

- Customizations such as special coatings, SS304 for better corrosion resistance can be done on all chains on request

DEEP PAN CONVEYOR CHAINS



Suitable for handling hot material like clinker in Horizontal and Inclined profile upto 45 degree. Pans are pressed in high capacity presses using special dies which imparts high strength and ensures very less spillage of handled material.



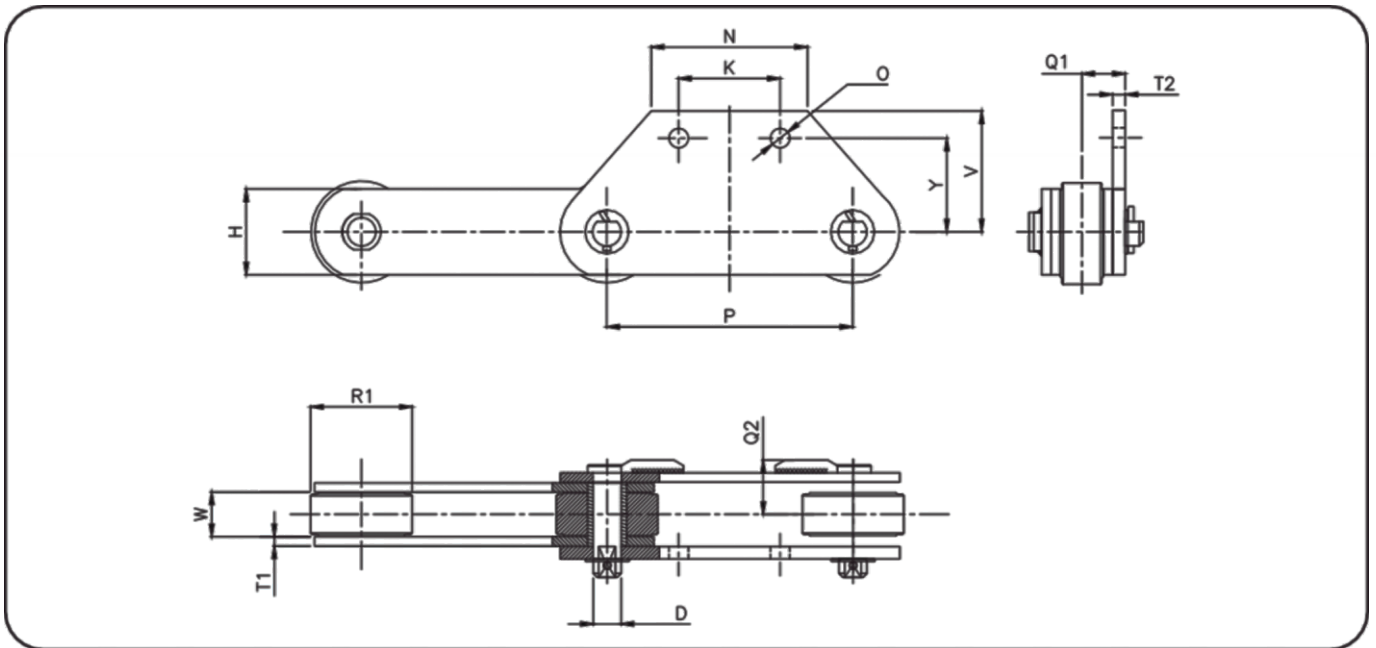
DEEP PAN CONVEYOR CHAINS

Chain No.	Pitch (P)	WIP (W)	Plate Ht. (H)	I/P Thk. (T1)	O/P Thk. (T2)	Bush/Roller Dia. (B)	Pin Dia. (D)	Min. Breaking Load, Kgs	Att. Type	Att. Ht. (Z)	Att. Hole Pitch (K)	Trans. Pitch1 (X)	Trans. Pitch2 (2X)	Att. Plate overall Width (V)	Att. Plate overall Width (2V)	Att. Hole Dia. (O)
HL10250-DP K2	250.00	45.00	65.00	10.00	10.00	40.00	26.00	40000	K2	57.50	75.00	-	148.00	-	194.00	14.00
HL10250-DP A2	250.00	45.00	65.00	10.00	10.00	40.00	26.00	40000	A2	59.50	80.00	70.00	-	95.50	-	14.00
HL08250-DP A2	250.00	45.00	65.00	8.00	8.00	35.00	26.00	25000	A2	59.50	80.00	70.00	-	90.00	-	14.00
HL12250L-DP A2	250.00	70.00	90.00	12.00	12.00	54.00	34.00	60000	A2	70.00	80.00	85.00	-	110.00	-	17.00
HL12250-DP K2	250.00	62.50	90.00	12.00	12.00	63.50	32.00	75000	K2	71.00	70.00	-	145.00	-	197.00	13.40
HL12250A-DP A2	250.00	65.00	90.00	12.00	12.00	44.00	29.50	70000	A2	70.00	75.00	87.50	-	117.50	-	14.00
HL08250-DP K2	250.00	28.00	55.00	8.00	8.00	40.00	19.50	12000	K2	61.00	80.00	-	140.00	-	190.00	13.00
HL12250H-DP A2	250.00	60.00	90.00	12.00	12.00	44.00	29.50	75000	A2	70.00	80.00	70.00	-	95.00	-	13.00
HL10250H-DP A2	250.00	45.00	75.00	10.00	10.00	40.00	26.00	50000	A2	65.00	80.00	74.00	-	96.50	-	14.00
HL12250-DP A2	250.00	60.00	80.00	12.00	12.00	40.00	24.50	70000	A2	65.00	75.00	85.00	-	115.00	-	14.00
HL10250A-DP A2	250.00	45.00	70.00	10.00	10.00	40.00	26.00	40000	A2	60.00	75.00	75.00	-	97.50	-	14.00

*All dimensions are nominal actual dimensions may vary (mm)

- Customizations such as special coatings, SS304 for better corrosion resistance can be done on all chains on request

SCRAPPER RECLAIMER CHAINS (ST SERIES)



For handling lime stone, coal, slag, clinker and especially designed for material handling equipment like stacker, bridge reclaimer, scraper reclaimer, clinker handling, deep bucket conveyor, Scraper Reclaimer Chain and sprockets are manufactured upto 250 / 315 mm pitch sizes. The rugged design of Scraper Reclaimer Chain coupled with high fatigue resistance of links and pins, lower frictional wear of bushes and rollers enable the chain to perform most adverse operating condition.



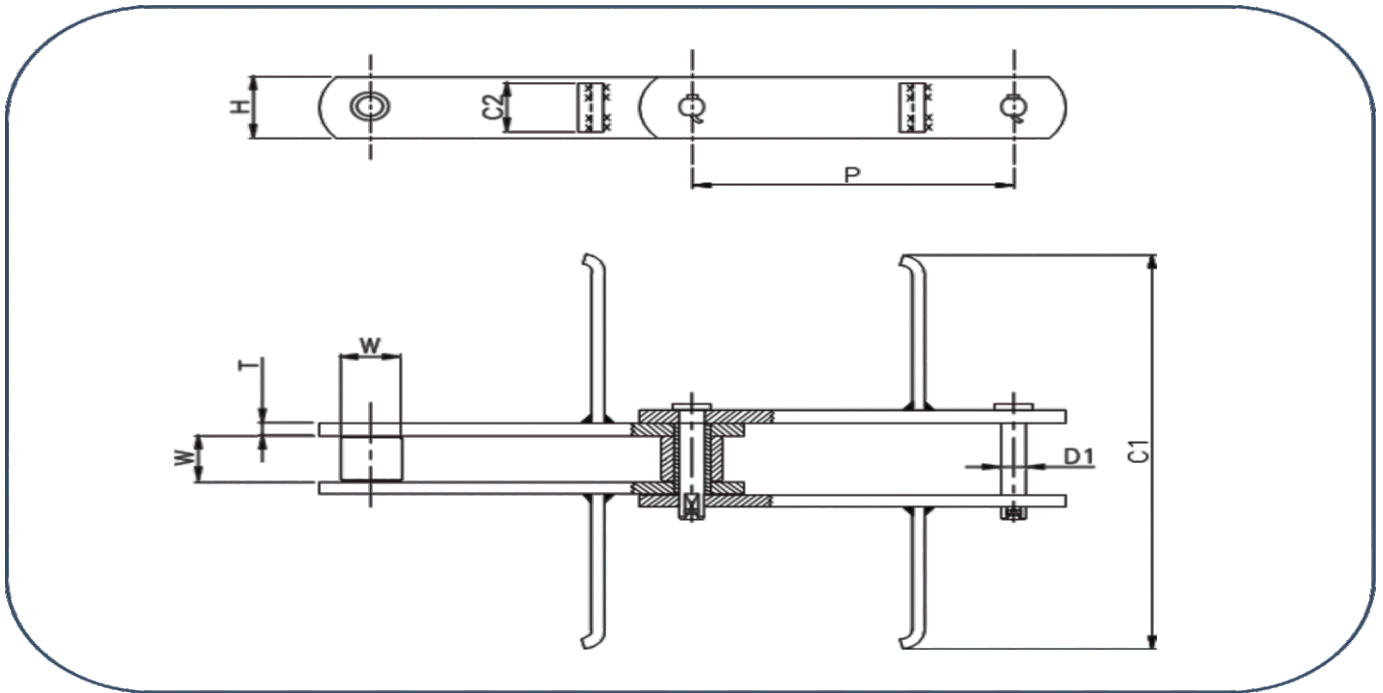
SCRAPPER RECLAIMER CHAINS (ST SERIES)

Chain no.	Pitch (P)	WIP (W)	Plate Ht. (H)	I/P Thk. (T1)	Lug Plate Thk. (T2)	Roller Dia. (R1)	Pin Dia. (D)	Min. Breaking Load, Kgs	Att. Type	Att. Ht. (Q1)	Wear Pad Ht. from Chain Center (Q2)	Att. Hole Pitch (K)	Att. Hole Dia. (O)	Att. Hole height from chain center (Y)	Overall Height (V)
HL10250-R ST2	250.00	32.00	50.00	10.00	12.00	60.00	20.00	25000	M2	40.00	-	90.00	20.00	80.00	119.00
HL10250H-R ST2	250.00	37.10	50.00	10.00	12.00	60.00	19.70	32000	M2	42.30	-	90.00	21.00	79.00	120.00
HL08250-R ST2	250.00	40.00	50.00	8.00	10.00	65.00	20.00	20000	M2	39.50	47.50	90.00	21.00	95.00	125.00
HL08250H-R ST2	250.00	40.00	57.00	8.00	10.00	85.00	21.00	40000	M2	45.00	55.00	130.00	21.00	95.00	125.00
HL12250-R ST2	250.00	50.00	75.00	12.00	16.00	120.00	28.00	65000	M2	54.00	66.00	130.00	25.00	120.00	155.00
HL14250-R ST2	250.00	38.00	65.00	14.00	16.00	95.00	27.00	75000	M2	51.50	59.50	130.00	20.50	95.00	120.00
HL12315-R ST2	315.00	50.00	80.00	12.00	16.00	120.00	32.00	60000	M2	54.75	66.75	130.00	25.00	120.00	155.00
HL12315H-R ST2	315.00	57.15	110.00	12.00	16.00	130.00	36.00	90000	M2	57.50	-70.50	130.00	25.00	120.00	155.00
HL16315-R ST2	315.00	61.00	100.00	16.00	16.00	115.00	40.00	110000	M2	65.00	81.00	110.00	21.00	107.00	130.00
HL16315H-R ST2	315.00	70.00	100.00	16.00	16.00	140.00	36.00	130000	M2	68.75	-	130.00	25.00	135.00	165.00
HL20315-R ST2	315.00	88.00	120.00	20.00	20.00	140.00	50.00	170000	M2	65.00	102.50	250.00	25.00	130.00	160.00
HL20315H-R ST2	315.00	88.00	125.00	20.00	20.00	150.00	50.00	200000	M2	65.00	102.50	250.00	25.00	130.00	160.00

*All dimensions are nominal actual dimensions may vary (mm)

- Customizations such as special coatings, SS304 for better corrosion resistance can be done on all chains on request

FLOW CONVEYOR CHAINS



Generally, a flow conveyor is used widely in the conveyance of bulk materials such as cement and fertilizer in chemical industries, and grain in food industries. Because it is enclosed, dust from the conveyed materials is contained, and will not pollute the surrounding area.



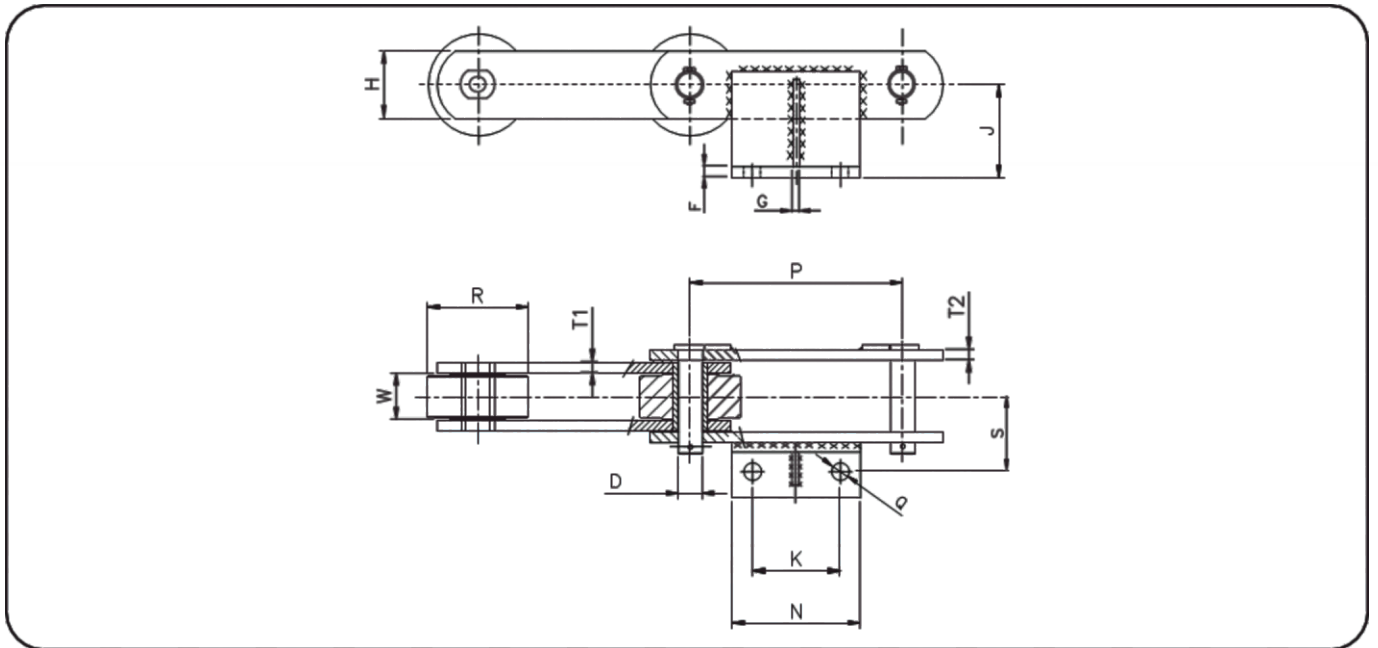
FLOW CONVEYOR CHAINS

Chain no.	Pitch (P)	Roller Dia. (R)	WIP (W)	Plate Ht. (H)	Plate Thk. (T)	Avg. Breaking Load Kgf	Min. Breaking Load Kgf	Pin Dia (D1)	Att. Length (C1)	Att. Width (C2)
HL05101-FL	101.60	20.10	22.60	25.40	5.0	5500	4675	9.7	135	22
HL06101-FL	101.60	22.20	27.00	28.60	6.0	8000	6800	11.3	135	25
HL06125L-FL	125.00	22.20	27.00	28.60	6.0	8000	6800	11.3	185	25
HL06125-FL	125.00	29.00	30.00	40.00	6.0	11500	9775	14.5	185	34
HL06125A-FL	125.00	29.00	30.00	40.00	6.0	11500	9775	14.5	225	34
HL06125H-FL	125.00	25.00	28.00	32.00	6.0	11750	10000	11.2	185	28
HL06150-FL	150.00	29.00	30.00	40.00	6.0	11500	9775	14.5	250	34
HL06150A-FL	150.00	29.00	30.00	40.00	6.0	11500	9775	14.5	300	34
HL08152-FL	152.40	34.90	37.10	44.50	8.0	19000	16150	15.9	250	40
HL08200-FL	200.00	34.90	37.10	44.50	8.0	19000	16150	15.9	330	40
HL10200A-FL	200.00	38.10	37.10	50.00	10.0	28500	24225	15.9	330	40
HL10200L-FL	200.00	40.10	51.40	50.00	10.0	25000	21250	19.1	330	46
HL10200-FL	200.00	40.10	51.40	50.00	10.0	25000	21250	19.1	430	46
HL10200H-FL	200.00	44.50	51.40	63.50	10.0	32000	27200	22.2	430	58

*All dimensions are nominal actual dimensions may vary (mm)

- Customizations such as special coatings, SS304 for better corrosion resistance can be done on all chains on request

SCRAPPER RECLAIMER CHAINS (WD SERIES)



For handling lime stone, coal, slag, clinker and especially designed for material handling equipment like stacker, bridge reclaimer, scraper reclaimer, clinker handling, deep bucket conveyor, Scraper Reclaimer Chain and sprockets are manufactured upto 250 / 315 mm pitch sizes. The rugged design of Scraper Reclaimer Chain coupled with high fatigue resistance of links and pins, lower frictional wear of bushes and rollers enable the chain to perform most adverse operating condition.

SCRAPPER RECLAIMER CHAINS (WD SERIES)

Chain no	Pitch (P)	WIP (W)	Plate Ht. (H)	I/P Thk. (T1)	O/P Thk. (T2)	Roller Dia. (R)	Pin Dia (D)	Min. Breaking Load, Kgs	Att. Type	Att. Ht. (J)	Chain Center to Att. Hole Center (S)	Att. Hole Pitch (K)	Att. Hole Dia. (Q)	Att. Length (N)	Rib Thk. (G)	Att. Thk. (F)
HL15315-R WD2	315.00	70.00	100.00	15.00	15.00	130.00	36.00	100000	WD2	140.00	117.50	130.00	25.00	190.00	10.00	12.00
HL12250-R WD2	250.00	39.50	60.00	12.00	12.00	85.00	28.00	51000	WD2	130.00	95.00	100.00	22.00	160.00	12.00	12.00
HL16250-R WD2	250.00	50.00	75.00	16.00	16.00	85.00	34.00	75000	WD2	130.00	105.00	100.00	21.00	160.00	16.00	16.00
HL12250A-R WD2	250.00	50.00	80.00	12.00	12.00	100.00	36.00	50000	WD2	109.00	101.50	79.50	25.50	151.00	10.00	12.00
HL10250H-R WD2	250.00	48.00	70.00	10.00	10.00	100.00	25.00	40000	WD2	110.00	90.50	90.00	22.00	140.00	10.00	10.00
HL10250-R WD2	250.00	40.00	70.00	10.00	10.00	100.00	30.00	30000	WD2	140.00	85.00	90.00	21.00	150.00	10.00	10.00
HL14250-R WD2	250.00	66.00	100.00	14.00	14.00	120.00	36.00	63000	WD2	140.00	113.00	80.00	25.00	140.00	10.00	12.00
HL12315-R WD2	315.00	52.00	80.00	12.00	12.00	120.00	35.70	60000	WD2	140.00	90.00	130.00	21.00	190.00	10.00	12.00
HL12315A-R WD2	315.00	52.00	100.00	12.00	12.00	120.00	36.00	65000	WD2	140.00	90.00	130.00	25.00	190.00	12.00	16.00
HL15315A-R WD2	315.00	70.00	110.00	15.00	15.00	150.00	38.00	110000	WD2	140.00	117.50	130.00	25.00	220.00	10.00	12.00

*All dimensions are nominal actual dimensions may vary (mm)

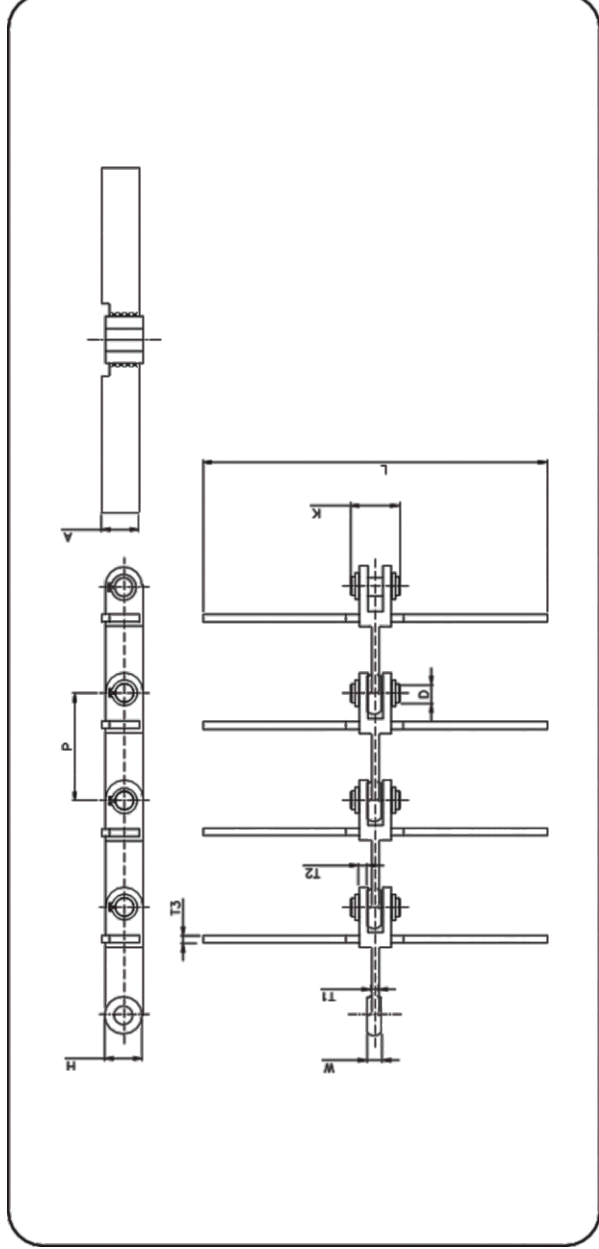
- Customizations such as special coatings, SS304 for better corrosion resistance can be done on all chains on request

FORGED LINK DRAG CHAINS

Chain No.	Pitch (P)	Width of Inner Link (W)	Link Height (H)	Link Thk.1 (T1)	Link Thk.2 (T2)	Pin Dia. (D)	Min. Breaking Load Kgf	Att. Thk. (T3)	Att. Width (A)	Pin Ht. (K)	Overall Length (L)
HL16142-FG	142.00	29.50	50.00	16.00	16.00	24.50	40000	10.00	50.00	85.00	456.00
HL11142-FG	142.00	19.50	50.00	11.00	11.00	24.50	30000	10.00	50.00	65.00	456.00
HL11142A-FG	142.00	19.50	50.00	11.00	11.00	24.50	30000	12.70	50.00	65.00	264.00

*All dimensions are nominal actual dimensions may vary (mm)

- Customizations such as special coatings, SS304 for better corrosion resistance can be done on all chains on request





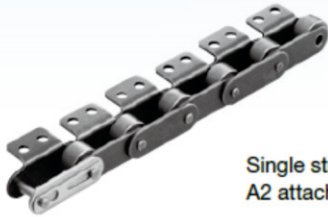
In-house production

**Unlike the other known brands
Handswell has its own real
manufacturing facility
dedicated for chain
manufacturing**

STANDARD ATTACHMENTS

1. A1, A2 Attachments

An A attachment has a bent link plate that extends out on one side of the chain, forming an L-shape. The attachment comes with one or two bolt holes and is designated as A1 or A2, respectively



Single strand with
A2 attachment every link

2. K1, K2 Attachments

A K attachment has a bent link plate that extends out on both sides of the chain. The attachment comes with one or two bolt holes and is designated as K1 or K2, respectively



Single strand with
K2 attachment every link

3. SA1, SA2 Attachments

With an SA attachment, the link plate is extended vertically on one side of the chain. The attachment comes with one or two bolt holes and is designated as SA1 or SA2, respectively



Single strand with
SA2 attachment every link

4. SK1, SK2 Attachments

With an SK attachment, the link plate is extended vertically on both sides of the chain. The attachment comes with one or two bolt holes and is designated as SK1 or SK2, respectively (SK1 only for RS type).



Single strand with
SK2 attachment every link

5. GNK1 Attachment

The GNK1 attachment indicates a chain with a bolt hole drilled into the center of the link plates on both sides of the chain.



Single strand with
GNK1 attachment every link

6. EP Attachment (Extended Pin)

One end of the pins is extended on one side of the chain.



Single strand with
EP attachment every link

7. Hollow Pin Chain

In Hollow Pin Chain, the pins have a hole, allowing for installation of various attachments.



Attachment Positioning

Chains can be assembled with an attachment on every link plate or at intervals of two or more links. However, placing an attachment on an outside link at an interval of an even number of links is convenient for maintenance purposes.

Single strand with
A2 attachment
every second link



Single strand with
A1 attachment
every fourth link



HANDSWELL'S CHAIN INDUSTRIES

hands you well always



M/S. HANDSWELL'S CHAIN INDUSTRIES LLP
G-2 BLOCK G2-1104
KG SIGNATURE CITY PH 2 ADAYALAMPATTU
TAMILNADU - 600 095

Website: www.handswellchains.com
Email: enquiry@handswellchains.com
Phone: +91-8248431963